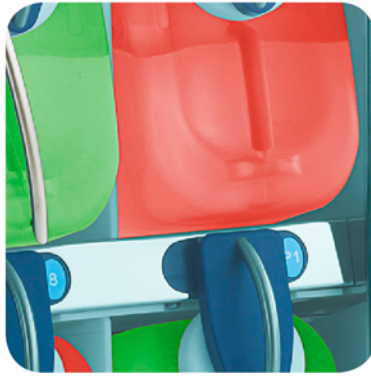
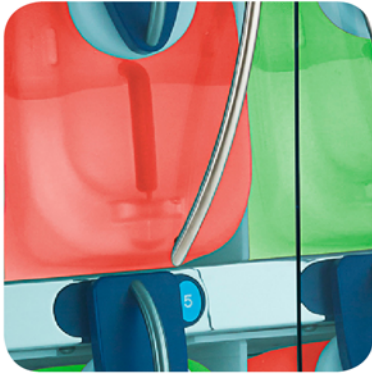


HISTOLOGY EQUIPMENT



VACUUM TISSUE
PROCESSORS

ETP
EFTP

PLUS



INTELSINT

ETP

ETP PLUS



Xylene Free.
All INTELSINT tissue processors can efficiently work with xylene and alcohol substitutes

Fully enclosed, "state of the art" features, safe and highly reliable, the Intelsint ETP Plus is the right answer for the day-by-day tissue processing needs of every Histology laboratory.

With a processing capacity of 450 specimens, three paraffin containers and an easy to operate HMI (Human Machine Interface) it sets itself at the top of the category.

Designed with specimens safety and operator ergonomics in mind, the ETP Plus is also capable of performing in unfavorable environments.

It's fully automated RFD (Remote Fill and Drain) feature allows the user a safe, clean and easy reagents renewal.

Simple and economic service and maintenance is one of the benefit of Intelsint ETP Plus

Code 906.003 + 906.030

EFTP

EFTP PLUS

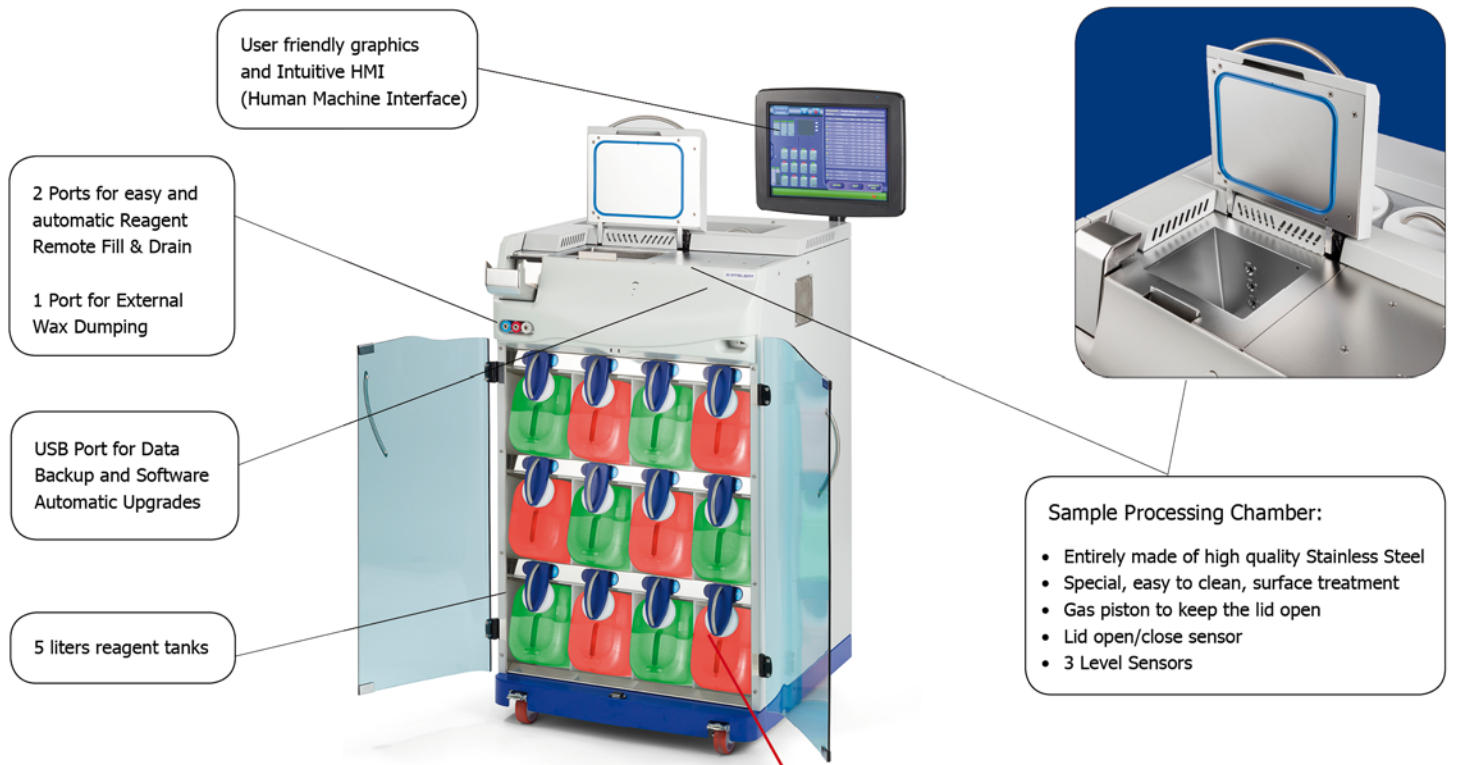
Fully enclosed, "state of the art" features, safe and highly reliable, the Intelsint EFTP Plus is the right answer for the day-by-day tissue processing needs of every Histology laboratory.

The EFTP Plus is the fastest non-microwave tissue processor today available. Up to 450 biopsies can be safely processed in 45 minutes. This result can be achieved with traditional reagents or with most of the Xylene and Ethyl alcohol substitutes available on the market.

The reagents heating is safely performed during filling into the sample processing chamber without any delay by a patented device called EHE (Enhanced Heat Exchanger). Only three reagents (plus fixation) are necessary to successfully and rapidly process biopsies. Every sample is evenly warmed at the desired temperature since the very beginning of each processing step. Any risk of overheating is avoided thanks to the special conformation and the multiple safety devices of the EHE.

Codice 906.004 + 906.030





User friendly graphics and Intuitive HMI (Human Machine Interface)

2 Ports for easy and automatic Reagent Remote Fill & Drain
1 Port for External Wax Dumping

USB Port for Data Backup and Software Automatic Upgrades

5 liters reagent tanks



Sample Processing Chamber:

- Entirely made of high quality Stainless Steel
- Special, easy to clean, surface treatment
- Gas piston to keep the lid open
- Lid open/close sensor
- 3 Level Sensors

Standard features

- ✓ Overnight Processing
- ✓ Fast Processing (microwave free) (EFTP)
- ✓ Reagent Management System (RMS)
- ✓ Remote Fill & Drain
- ✓ 450 samples capacity
- ✓ 15" Touch Screen Operation Control
- ✓ 3 Level Sensors
- ✓ Reagent Partial Load Capacity
- ✓ Wax Cleaning Cycle
- ✓ Data Backup on USB port
- ✓ 18 Process Programs
- ✓ Reverse Processing Special Program
- ✓ Process End Time Management
- ✓ Fume Control Charcoal Filter
- ✓ Operator management with customizable level of access
- ✓ Operator Login with barcode reader

- New features on the model PLUS:**
- Backlighted reagents tanks to facilitate the evaluation of the reagent level inside the tank
 - Backlight with color change related to the status of the reagent:
 - Green color = reagent good
 - Red color = reagent need to be changed
 - RFID sensors on each tank (12 sensors per instrument) to check:
 - Tank Present/not present
 - Tank in correct position/incorrect position
 - Tank inserted correctly/not inserted correctly
 - Tank containing the correct reagent for that position (only for tanks prefilled in the factory with Intelsint tag)

Optional features

- ✓ Backup system with external UPS
- ✓ Safeguard reagents management
- ✓ Data protection system with CPU-UPS
- ✓ Reagent Management System with RFID
- ✓ Backlighted Reagents tanks
- ✓ Identification of the baskets with barcode reader
- ✓ Connection with the L.I.S.
- ✓ Remote connection for service



Process Editing

Simple
Clear
Easy
Intuitive

18 Process available

Drag & Copy Function
Copy Process Function
Controlled Field Value



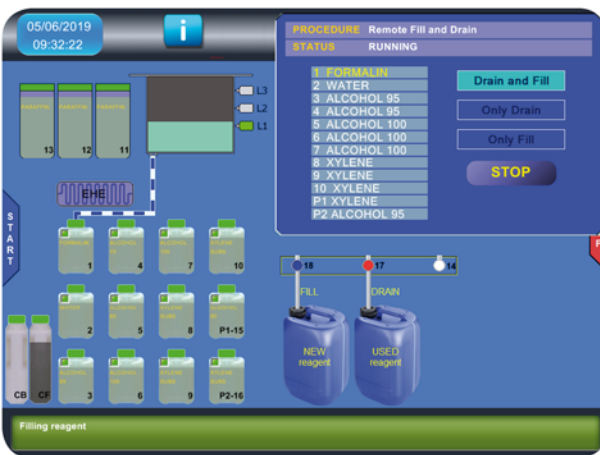
Process Start and Run

Most Used Process Function
Easy End of Process Setting

Graphic Process Controls
Multi-language
Reagent Level Check
Partial Reagent Load
Samples Baskets Check

Info Function to check 'at a glance' the most important instrument parameters

Reagent Quality Check



Remote Fill & Drain

To change the reagents easily
without removing tanks

Graphic RFD Control
Reagent Quality Check
Easy and Intuitive HMI
RFD connected with RMS

Fast and Fully Automated

2 Ports for Reagents
1 Port for Paraffin

The new features of the PLUS model are strictly related to the RMS system and allow to:

- Reduce drastically the possibility to make errors during the management of the reagents.
 - Make the work of the laboratory technicians more easy and safe.
 - Increase the quality of processing
 - Reduce the risk of sample over or under processed
- Reduce the quantity of samples that need to be reprocessed (this can occur during the use of any type or model of tissue processors when the quality of the reagent is not managed correctly)



Tissue processor configuration



ETP
 Vacuum Tissue Processor
 360/450 samples
PLUSM
 Plus module: integration with
 RFID/NFC system for each reagent tank
 (12 sensors)
 (Code 906.003 + 906.030)



EFTP
 Fast Tissue Processor
 360/450 samples
PLUSM
 Plus module: integration with
 RFID/NFC system for each reagent tank
 (12 sensors)
 (Code 906.004 + 906.030)



UPS1
 UPS
 230V -1350W for ETP
 (Code: 3UP.S01)



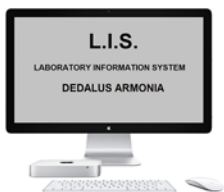
UPS2
 UPS
 230V -1980W for EFTP
 (Code: 3UP.S02)



BRSW
 Barcode reader software
 (for basket identification)
 (Code 906.060)



BRG
 Barcode reader gun
 (Code: 3BC.R01)



ALIS
 Connection with LIS system
 Dedalus Armonia
 (Code: 906.050)



OR



OLIS
 Connection with LIS system
 other companies
 (Code: 906.059)



RSSW
 Remote Service software licence
 (Code: 906.061)



		ETP Plus	EFTP Plus
Technical Specification	Sample Processing Capacity	360/450	
	Sample baskets	3	
	Load capacity for histological samples	450	
	SPC Level Sensors	3	
	EHE for Fast Processing	NO	YES
	RFID Sensors	12	
Protocols features	Processing Programs	18	
	Prefered programs, with quick start	6	
	Purge programs	4	
	Reverse Processing Special Program	1	
	Maximum time for each step	99 hh and e 59 mm	
	Start process maximum dalay	15 gg max	
	Process End time/date	User programmable	
Reagents	Processing reagents	10 Tanks - 5 Lt.	
	Process chamber washing reagents	2 Tanks - 5 Lt.	
	Paraffin Containers	3 of 5 Lt.	
	Reagents Temperature Range	20 - 65 (°C)	
	Paraffin Temperature Range	55 - 65 (°C)	
	Processing pressures	600/1200 Hpa	
	RMS - Reagent Management System	YES	
	RFD - Remote Fill & Drain	YES	
	EWD - External Wax Dumping	YES	
	PWD - Protected Wax Dumping	YES	
	Vapor treatment	Charcoal filter	
	Safe reagents (optional with External UPS)	YES	
	Features HW & SW	Touch screen monitor	Colors LCD TFT - 15"
Available software languages		12	
USB Ports (Data transfer, backup, Printer, UPS)		5	
Network ports (Ethernet)		2	
Remote Alarm Port		YES	
External UPS (Optional)		1350 W	1820 W
Electrical data	Rating	115-230 Vac - 50/60 Hz	
	Installed power	1000 W	1500 W
Env. conditions	Temperature / Umidity	15 - 30 °C / 70% max	
	Maximum elevation	2500 mls	
Approvals	CE, CTUVus	UL 61010-1:2004 R10.08, IEC 61010-2-010:2003, IEC 61010-2-101:2002, CAN/CSA-C22.2 NO. 61010-1-04+GI1_610-2-010-04_610.2.101-04	
Dimensions and weights	Dimensions (LxDxH)	680 x 700 x 1500 mm (with monitor)	
	Weight	198 Kg	226 Kg

